

# THE ISSUES...

**Arctic youth** face many multifaceted challenges in a **changing physical, economic, and social region** – but are too often left out of the conversation

ABUSE & NEGLECT

SUICIDE

FOOD INSECURITY

HEALTH

CULTURE

EDUCATION

The **high rates of suicide** among young men have largely been associated with **feelings of ...**

ECONOMIC FRUSTRATION

ISOLATION

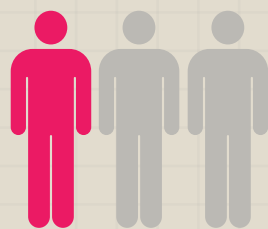
DISCONNECTION

RATES OF SUICIDE ARE

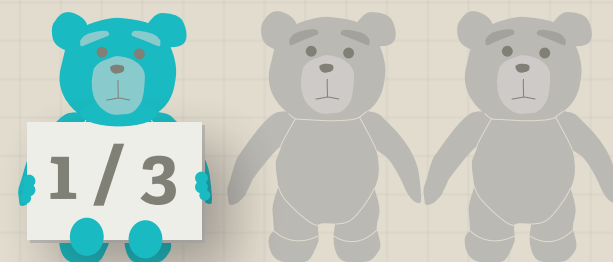
**FOUR**  
TIMES HIGHER

...among **Alaska Natives** than their non-Native peers

**1 in 3** young reindeer herders in the Arctic consider **suicide**



Children who have been sexually abused have higher rates of drug and alcohol misuse



youth in Greenland has their first sexual encounter

**INVOLUNTARILY**

For Alaska Natives, the rates of **suicide** have increased

**500%**  
Since 1960

## DID YOU KNOW?

Mental-health and behavioral issues pose dire risks to Arctic residents, who suffer from high rates of violence, depression, and suicide

In 2013, **49** children from North Slope alone had to fly more than **500 miles** to Fairbanks, the closed child advocacy center

START

FINISH

Because of limited internet, **distance learning** is not often possible



In Nunavik, Quebec, fewer than **one student in five** successfully completes the final year of secondary school

**55%**

Of Alaska Native students graduated in 2013-2014

**82%**

Of Students graduated in the United States

## PERSISTENT ORGANIC POLLUTANTS

**POP's** travel to the Arctic from distant sources, and the region acts as a **sink**

Studies suggest exposure to these **toxins** are linked to ...

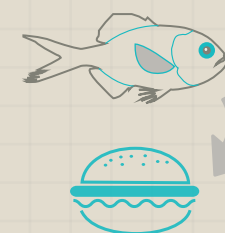
**stillbirths, birth defects, low birth weight and spontaneous abortions**

**70%**

Of Inuit preschoolers in Nunavut resided in households rated as **food insecure**

**ONE IN FIVE**

Alaskan children are not always certain about their **next meal**



Exposure to a western lifestyle has resulted in a shift in diet towards western, **less nutritious** diets

**A LOOK INTO THE FUTURE...**

**Climate change** will continue to exacerbate all of these issues

**Climate change** brings with it many issues of personal safety and community well being, with **new diseases, more hazardous travel conditions, infrastructure instability** from thawing permafrost, and **threats to traditional culture**